



Catalog No
Z14333
Replaces Z13932
2013



RETAIL EXHAUST CATALOG

Exhaust Accessories & Performance Parts



TABLE OF CONTENTS

By Category	Page
Adapters	2
Connectors	2
Converter Repair Flanges	13
Elbows	6
Exhaust Fittings	13
Exhaust Repair Kits	3
Flex Repair Flanges	18-19
Flex Tubing	7
Metal Racks	20-21
Muffler Clamps	8-11
Repair Hardware	15
Resonators	5
Rubber Insulators	14
Split Flanges	13
Spring Bolt Kits	12
Tailpipes	4
Tips: Bolt On Chrome	30-32
Tips: Bolt On Stainless Steel	28-29
Tips: Weld On Stainless Steel	23-27
Turndowns	5
Universal Hangers	16-17

ADAPTERS & CONNECTORS

ID - OD Reducer	
Part No.	Description
548553	1-1/2" ID X 1-1/4" OD
548520	1-1/2" ID X 1-3/8" OD
548532	1-1/2" ID X 1-3/4" OD
548557	1-1/2" ID X 2" OD
548580	1-3/8" ID X 1-1/4" OD
548554	1-5/8" ID X 1-1/2" OD
548533	1-3/4" ID X 1-1/2" OD
548552	1-3/4" ID X 1-5/8" OD
548534	1 7/8" ID X 1-1/2" OD
548526	1-7/8" ID X 1-3/4" OD
548516	2" ID X 1-3/4" OD
548508	2" ID X 1-13/16" OD
548528	2" ID X 1-7/8" OD
548535	2-1/8 X 1-3/4" OD
548514	2-1/8" ID X 2" OD
548509	2-1/4" ID X 1-7/8" OD
548502	2-1/4" ID X 2" OD
548521	2-1/4" ID X 2-1/8" OD
548579	2-3/8" ID X 2" OD
548505	2-1/2" ID X 2" OD
548540	2-1/2" ID X 2-1/8" OD
548518	2-1/2" ID X 2-1/4" OD
548585	2-3/4" ID X 2-1/2" OD
548584	3" ID X 2-3/4" OD
617571	3" ID X 2-1/2" OD X 6"

ID - ID Reducer	
Part No.	Description
671581	1-1/2" ID X 1-1/4" ID
617574	1-5/8" ID X 1-1/2" ID
548548	1-3/4" ID X 1-1/2" ID
548550	1-3/4" ID X 1-5/8" ID
617575	1-7/8" ID X 1-3/4" ID
548506	2" ID X 1-1/2" ID
548503	2" ID X 1-3/4" ID
548544	2" ID X 1-7/8" ID
548542	2-1/8" ID X 1-7/8" ID
548547	2-1/4" ID X 2-1/8" ID
548543	2-1/4" ID X 1-3/4" ID
548545	2-1/4" ID X 2" ID
548549	2-1/4" ID X 2-3/8" ID
548546	2-1/2" ID X 2" ID
548522	2-1/2" ID X 2-1/4" ID
617579	3" ID X 2-1/2" ID

OD - OD Reducer	
Part No.	Description
617576	2" OD X 1-13/16" OD
617564	2" OD X 1-3/4" OD
617568	2-1/2" OD X 2" OD
617569	2-1/2" OD X 2-1/4" OD

OD - ID Reducer	
Part No.	Description
548530	1-1/2" OD X 1-3/8" ID
548555	1-5/8" OD X 1-1/2" ID
548536	1-3/4" OD X 1-5/8" ID
548537	1-7/8" OD X 1-3/4" ID
548507	2" OD X 1-3/4" ID
548527	2" OD X 1-7/8" ID
617577	2-1/8" OD X 2" ID
548556	2-1/4" OD X 1-3/4" ID
548523	2-1/4" OD X 2" ID
548558	2-1/2" OD X 2-1/8" ID
617566	2-1/2" OD X 2" ID
548551	2-1/2" OD X 2-1/4" ID
617572	3" OD X 2" ID
617573	3" OD X 2-1/4" ID
548583	3" OD X 2-1/2" ID
548588	3" OD X 2-3/4" ID

ID - OD Connector	
Part No.	Description
548531	1-1/2" ID X 1-1/2" OD
548539	1-5/8" ID X 1-5/8" OD
548515	1-3/4" ID X 1-3/4" OD
548538	1-7/8" ID X 1-7/8" OD
548501	2" ID X 2" OD
548525	2-1/8" ID X 2-1/8" OD
548512	2-1/4" ID X 2-1/4" OD
548517	2-1/2" ID X 2-1/2" OD
548587	2-3/4" ID X 2-3/4" ID
548581	3" ID X 3" OD X 4"

OD - OD Connector	
Part No.	Description
617565	2" OD X 2" OD
617570	2-1/2" OD X 2-1/2" OD
617578	3" OD X 3" OD X 6"

ID - ID Connector	
Part No.	Description
548519	1-1/2" ID X 1-1/2" ID
548574	1-5/8" ID X 1-5/8" ID
548529	1-3/4" ID X 1-3/4" ID
548524	1-7/8" ID X 1-7/8" ID
548504	2" ID X 2" ID
548510	2-1/8" ID X 2-1/8" ID
548511	2-1/4" ID X 2-1/4" ID
548513	2-1/2" ID X 2-1/2" ID
548586	2-3/4" ID X 2-3/4" ID
548582	3" ID X 3" ID X 4"

409 SS OD - ID Reducer	
Part No.	Description
648221	2-1/4" OD X 1-3/4" ID
648222	2-1/4" OD X 2" ID
648220	2-3/4" OD X 2" ID
648217	2-3/4" OD X 2-1/8" ID
648219	2-3/4" OD X 2-1/4" ID
648215	2-34" OD X 2-1/2" ID

409 SS OD - OD Connector	
Part No.	Description
648218	2-14" OD X 2-1/4" OD
648216	2-3/4" OD X 2-3/4" OD



DIMENSIONS ARE ID - ID

EXHAUST REPAIR KITS

18" FLEXIBLE STEEL TUBING	
Part No.	Description
540150	1-1/2" ID X 18"
540162	1-5/8" ID X 18"
540175	1-3/4" ID X 18"
540187	1-7/8" ID X 18"
540201	2" ID X 18"
540213	2-1/8" ID X 18"
540225	2-1/4" ID X 18"
540238	2-3/8" ID X 18"
540250	2-1/2" ID X 18"
540275	2-3/4" ID X 18"
540300	3" ID X 18"

* Note: Each case contains 6 tubes each packaged with a clamp

6' FLEXIBLE STEEL TUBING	
Part No.	Description
541009	1-1/2" ID X 6'
541010	1-3/4" ID X 6'
541011	1-7/8" ID X 6'
541012	2" ID X 6'
541013	2-1/8" ID X 6'
541014	2-1/4" ID X 6'
541015	2-1/2" ID X 6"
541016	2-3/4" ID X 6'
541017	3" ID X 6"

* Note: Each case contains 6 tubes

25' FLEXIBLE STEEL TUBING	
Part No.	Description
540114	1-1/4" ID X 25'
540112	1-1/2" ID X 25'
540158	1-5/8" ID X 25'
540134	1-3/4" ID X 25'
540178	1-7/8" ID X 25'
540200	2" ID X 25'
540218	2-1/8" ID X 25'
540214	2-1/4" ID X 25'
540212	2-1/2" ID X 25'
541300	3" ID X 25'
541312	3-1/2" ID X 25'
541400	4" ID X 25'
541500	5" ID X 25'

* Note: Each case contains 1 tube



* Clamp packaged with 18" tube only

* Individually Boxed

TAILPIPES

ALL TAILPIPES ARE MADE OF HEAVY GAUGE ALUMINIZED STEEL TUBING FOR EASE OF INSTALLATION AND CLAMPING PROCESS.

ALL DIMENSIONS ARE ID - OD.

TAILPIPES 12"	
Part No.	Description
548640	1-1/2" ID X 1-1/2" OD X 12"
548641	1-5/8" ID X 1-5/8" OD X 12"
548642	1-3/4" ID X 1-3/4" OD X 12"
548643	1-7/8" ID X 1-7/8" OD X 12"
548644	2" ID X 2" OD X 12"
548645	2-1/8" ID X 2-1/8" OD X 12"
548646	2-1/4" ID X 2-1/4" OD X 12"
548647	2-1/2" ID X 2-1/2" OD X 12"
548648	3" ID X 3" OD X 12"

TAILPIPES 18"	
Part No.	Description
548620	1-1/2" ID X 1-1/2" OD X 18"
548629	1-5/8" ID X 1-5/8" OD X 18"
548621	1-3/4" ID X 1-3/4" OD X 18"
548622	1-7/8" ID X 1-7/8" OD X 18"
548623	2" ID X 2" OD X 18"
548627	2-1/8" ID X 2-1/8" OD X 18"
548624	2-1/4" ID X 2-1/4" OD X 18"
548625	2-1/2" ID X 2-1/2" OD X 18"
548628	3" ID X 3" OD X 18"

TAILPIPES 24"	
Part No.	Description
548630	1-1/2" ID X 1-1/2" OD X 24"
548631	1-3/4" ID X 1-3/4" OD X 24"
548632	1-7/8" ID X 1-7/8" OD X 24"
548633	2" ID X 2" OD X 24"
548636	2-1/8" ID X 2-1/8" OD X 24"
548634	2-1/4" ID X 2-1/4" OD X 24"
548635	2-1/2" ID X 2-1/2" OD X 24"

TAILPIPES 36"	
Part No.	Description
548367	1-1/2" ID X 1-1/2" OD X 36"
548364	1-3/4" ID X 1-3/4" OD X 36"
548365	1-7/8" ID X 1-7/8" OD X 36"
548361	2" ID X 2" OD X 36"
548363	2-1/8" ID X 2-1/8" OD X 36"
548362	2-1/4" ID X 2-1/4" OD X 36"
548366	2-1/2" ID X 2-1/2" OD X 36"
548369	3" ID X 3" OD X 36"
548370	3" OD X 3" OD X 36"



TURNDOWNS & RESONATORS

ALL TURNDOWNS AND RESONATORS ARE MADE OF HEAVY GAUGE ALUMINIZED STEEL TUBING

TURNDOWNS

TURNDOWNS (SPOUTS) 9"	
Part No.	Description
622178	1-7/8" OD

TURNDOWNS (SPOUTS) 10"	
Part No.	Description
622134	1-3/4" OD



TURNDOWNS (SPOUTS) 12"	
Part No.	Description
548600	1-1/2" ID
548601	1-3/4" ID
548602	1-7/8" ID
548603	2" ID Slant Cut
548606	2-1/8" ID
548604	2-1/4" ID
548605	2-1/2" ID
548607	2-3/4" ID
548608	3" ID
622200	2" OD Round Cut
622214	2-1/4" OD

TURNDOWNS (SPOUTS) 30"	
Part No.	Description
548610	1-1/2" ID
548611	1-3/4" ID
548612	1-7/8" ID
548613	2" ID
548616	2-1/8" ID
548614	2-1/4" ID
548615	2-1/2" ID



RESONATORS

DIMENSIONS ARE ID - ID

RESONATORS 18"	
Part No.	Description
548650	1-1/2" ID X 1-1/2" ID
548651	1-3/4" ID X 1-3/4" ID
548652	1-7/8" ID X 1-7/8" ID
548653	2" ID X 2" ID
548656	2-1/8" ID X 2-1/8" ID
548654	2-1/4" ID X 2-1/4" ID
548655	2-1/2" ID X 2-1/2" ID

ELBOWS

ALL ELBOWS ARE MADE OF HEAVY GAUGE ALUMINIZED STEEL TUBING

ELBOWS 90°	
Part No.	Description
548700	1 1/2" ID X 1 1/2" OD
548701	1 3/4" ID X 1 3/4" OD
548702	1 7/8" ID X 1 7/8" OD
548703	2" ID X 2" OD
548704	2 1/4" ID X 2 1/4" OD
548705	2 1/2" ID X 2 1/2" OD
548707	2 3/4" ID X 2 3/4" OD
548706	3" ID X 3" OD



ELBOWS 45°	
Part No.	Description
548750	1 1/2" ID X 1 1/2" OD
548751	1 3/4" ID X 1 3/4" OD
548752	1 7/8" ID X 1 7/8" OD
548753	2" ID X 2" OD
548754	2 1/4" ID X 2 1/4" OD
548755	2 1/2" ID X 2 1/2" OD
548757	2 3/4" ID X 2 3/4" OD
548756	3" ID X 3" OD

ELBOWS 20°	
Part No.	Description
548770	1 1/2" ID X 1 1/2" OD
548771	1 3/4" ID X 1 3/4" OD
548772	1 7/8" ID X 1 7/8" OD
548773	2" ID X 2" OD
548774	2 1/4" ID X 2 1/4" OD
548775	2 1/2" ID X 2 1/2" OD

FLEX TUBING

All of our Flex Tubing features a full size 321 Stainless Steel Bellows for less restriction as well as large bellows convolutions for greater flexibility. The nipples are fully expandable aluminized tubing, with 304 Stainless Steel wire braiding.

DOUBLE PLY WITH NIPPLE EXTENSIONS		
Part No	Bellows Size	Overall Length
513404	1-3/4" ID x 4"	8 1/2"
513406	1-3/4" ID x 6"	10 1/2"
513408	1-3/4" ID x 8"	12 1/2"
513410	1-3/4" ID x 10"	14 3/4"
520004	2" ID x 4"	8 1/2"
520006	2" ID x 6"	10 1/2"
520008	2" ID x 8"	12 1/2"
520010	2" ID x 10"	14 3/4"
522504	2-1/4" ID x 4"	8 1/2"
522506	2-1/4" ID x 6"	10 1/2"
522508	2-1/4" ID x 8"	12"
522510	2-1/4" ID x 10"	14"
525006	2-1/2" ID x 6"	10 1/2"
525008	2-1/2" ID x 8"	12"
525010	2-1/2" ID x 10"	14"
530004	3" ID x 4"	8"
530006	3" ID x 6"	10"
530008	3" ID x 8"	12"



*Note: 10 per case

MUFFLER CLAMPS

HEAVY DUTY GM STYLE

Part No.	Description
511150	1 1/2"
511174	1 3/4"
511188	1 7/8"
511201	2"
511213	2 1/8"
511225	2 1/4"
511250	2 1/2"



* Individually Boxed

511 Series packed 50 per case.
511 Series are available in Ten Pack Sleeves: To order add "T" to part number. Example: 511201T

HEAVY DUTY TRUCK • WELDED SADDLE • ROUND U-BOLT



Welded Saddle

Part No.	Description	Notes
638234	2-3/4" Welded Saddle	
638300	3" Welded Saddle	
638312	3-1/2" Welded Saddle	
638314	3-1/4" Welded Saddle	
638400	4" Welded Saddle	
638412	4-1/2" Welded Saddle	
638500	5" Welded Saddle	
638600	6" Welded Saddle	

638 Series packed 10 per case

* Individually Boxed

AIR TUBE CLAMPS

Part No.	Description
640012	1/2"
640034	3/4"
640058	5/8"
640100	1"

10 bulk clamps per box

Part No.	Description
641112	1/2"
641134	3/4"
641158	5/8"
641100	1"

Individually bagged
10 bags per box/master carton



MUFFLER CLAMPS

STANDARD DUTY 5/16" U-BOLT

Part No.	Description
510118	1-1/8"
510114	1-1/4"
510138	1-3/8"
510112	1-1/2"
510158	1-5/8"
510134	1-3/4"
510178	1-7/8"
510200	2"
510218	2-1/8"
510214	2-1/4"
510212	2-1/2"



All of ROL's 5/16" Standard clamps and our 3/8" Heavy Duty clamps feature a reinforced rib saddle construction that is performed by the professional installer.

Longer U-Bolts to provide more thread and serrated flange nuts for greater holding power.

510 Series packed 50 per case.

* Individually Boxed

HEAVY DUTY 3/8" U-BOLT

Part No.	Description	Notes
517112	1-1/2" HD 3/8" U-Bolt	
517134	1-3/4" HD 3/8" U-Bolt	
517158	1-5/8" HD 3/8" U-Bolt	
517178	1-7/8" HD 3/8" U-Bolt	
517200	2" HD 3/8" U-Bolt	
517218	2-1/8" HD 3/8" U-Bolt	
517214	2-1/4" HD 3/8" U-Bolt	
517212	2-1/2" HD 3/8" U-Bolt	
517234	2-3/4" HD 3/8" U-Bolt	
517300	3" HD 3/8" U-Bolt	
517312	3-1/2" HD 3/8" U-Bolt	
517400	4" HD 3/8" U-Bolt	
517412	4-1/2" HD 3/8" U-Bolt	
517500	5" HD 3/8" U-Bolt	



* Individually Boxed

517 Series 1-1/2" to 2-3/4" packed 50 per case.

517 Series 3" to 5" packed 10 per box.

HEAVY DUTY STAINLESS STEEL 3/8" U-BOLT

Part No.	Description
514112	1-1/2"
514158	1-5/8"
514134	1-3/4"
514178	1-7/8"
514200	2"
514218	2-1/8"
514214	2-1/4"
514212	2-1/2"
514300	3"



* Individually Carded

514 Series packed 10 per case.

MUFFLER CLAMPS

ACCUSEAL® BY TORCA®



ALUMINIZED SINGLE BOLT CLAMP

ALUMINIZED	
Part No.	Description
670200	2"
670214	2-1/4"
670212	2-1/2"
670234	2-3/4"
670300	3"
670312	3-1/2"
670400	4"
670412	4-1/2"
670500	5"
670600 *	6"

Individually bagged 10 per case

* Individually bagged 5 per case



430 BRIGHT SS SINGLE BOLT CLAMP

430 BRIGHT STAINLESS STEEL	
Part No.	Description
673200	2"
673214	2-1/4"
673212	2-1/2"
673234	2-3/4"
673300	3"
673312	3-1/2"
673400	4"
673412	4-1/2"
673500	5"
673600 *	6"

Individually bagged 10 per case

* Individually bagged 5 per case

MUFFLER CLAMPS

EASYSEAL[®] BY TORCA[®]

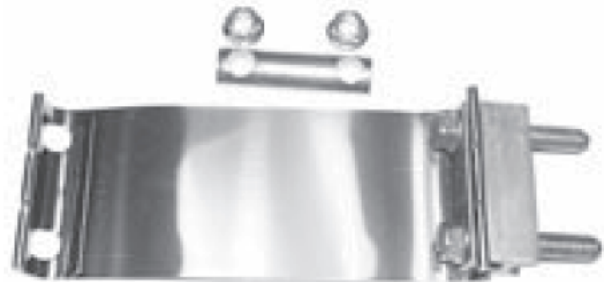
STAINLESS STEEL	
Part No.	Description
E20ST	2"
E22ST	2-1/4"
E25ST	2-1/2"
E27ST	2-3/4"
E30ST	3"
E32ST	3-1/4"
E35ST	3-1/2"
E37ST	3-3/4"
E40ST	4"
E45ST	4-1/2"
E50ST	5"
E60ST	6"

Carded packaged 10 per box

EASYSEAL IS A BUTT JOINT CLAMP USED TO CONNECT PIPE WITH THE SAME DIAMETER TOGETHER.

STAINLESS STEEL	
Part No.	Description
E25STB	2-1/2"
E27STB	2-3/4"
E30STB	3"
E35STB	3-1/2"
E40STB	4"
E50STB	5"
E60STB	6"

Bulk packaged 40 per box



TORCTITE[®] PREFORMED BY TORCA[®]

STAINLESS STEEL	
Part No.	Description
L25SA	2-1/2"
L27SA	2-3/4"
L30SA	3"
L35SA	3-1/2"
L40SA	4"
L50SA	5"

Boxed packaged 10 per box



ALUMINIZED	
Part No.	Description
L20AA	2"
L22AA	2-1/4"
L25AA	2-1/2"
L27AA	2-3/4"
L30AA	3"
L35AA	3-1/2"
L40AA	4"
L50AA	5"

Boxed packaged 10 per box

TORCTITE IS A LAP JOINT CLAMP USED TO CONNECT OD PIPE TO ID PIPE

SPRING BOLT KITS



601423

Chrysler Cars & Trucks
1982 - 1997



601491

Acura & Honda Cars
1975 - 1998



601925

GM Trucks
1988 - 1996



601441

GM Cars & Trucks
1978 - 1998



601927

Ford & Mazda Cars & Trucks
1982 - 1998



601932

GM Cars & Trucks
1978 - 1992



601442

GM Cars & Trucks
1978 - 1998



601562

Toyota @ Converter
2000 - 2008



601563

Toyota @ Muffler
2000 - 2008

* Note: Individually bagged 10 per carton

EXHAUST FITTINGS

Buick Ball	Female Ball	Flat Flare	Description
544301	544307	544313	2" ID
544302	544308	544314	2 1/4" ID
544303	544309	544315	2 1/2" ID

* Note: 6 per case



SPLT FLANGES

Part No.	Description	Fits Pipe	No. Bolt Holes
577762	Audi, Volkswagon	1 7/8"	3
577763	Chevrolet, Chevrolet Truck, GMC Truck	2"	3
577756	Chevrolet, Chevrolet Truck, GMC Truck	2 1/2"	3
577764	Chevrolet, Chevrolet Truck, GMC Truck	2 5/8"	3
577760	UNIVERSAL	1 3/4"	2
577759	UNIVERSAL	1 5/8"	2
577755	UNIVERSAL	2"	2
577757	UNIVERSAL	2 1/4"	2
577758	UNIVERSAL	2 1/2"	2
577761	UNIVERSAL	2 1/2"	2

* Note: 12 per case



REPAIR FLANGES

UNIVERSAL CONVERTER REPAIR FLANGE

Part No.	Description
529200	Fits pipes 1 1/2" to 2"
529225	Fits pipes 2" to 2-1/4"
529250	Fits pipes 2 1/4" to 2 1/2"

* Note: Individually bagged 10 per carton



RUBBER INSULATORS



GM, NISSAN, & TOYOTA

511175



AUDI & VOLKSWAGON

511176



ACURA & HONDA

511179



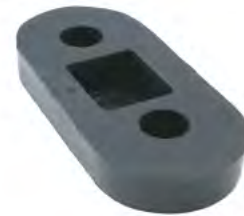
GM PRODUCTS

511180



FORD PRODUCTS

511181



CHRYSLER PRODUCTS

511182



GM, NISSAN, & TOYOTA

511183



GM, SUZUKI, & TOYOTA

511187



GM & GMC TRUCKS

511350



AUDI & VOLKSWAGON

511568



LEXUS & TOYOTA

511931



NISSAN PRODUCTS

511939

REPAIR HARDWARE

EXHAUST LEAK REPAIR KIT

Part No.	Description
540050	Aluminum Exhaust Wrap with 2 Clamps and Repair Tape

*NOTE: Individually packaged 6 per case



STRAP KIT

Part No.	Description
615002	Metal Strap with 2 nuts & 2 bolts

*NOTE: Individually packaged 12 per case



UNIVERSAL MUFFLER STRAP

Part No.	Description
615010	Universal Stainless Steel Muffler Strap

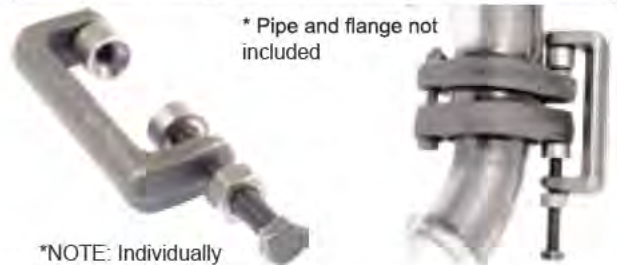


*NOTE: Individually packaged 6 per case

MANIFOLD STUD CLAMP

Part No.	Description
631274	1/4" to 1-3/4"
631275	1-1/2" to 2-3/4"
631276	2-1/4" to 3-3/4"

* Pipe and flange not included



*NOTE: Individually packaged 10 per case

SPHERICAL JOINT SYSTEM

Part No.	Description
SJS2	spring-loaded ball joint for use in connecting exhaust systems

- Competitive Price- Lower cost alternative to flex couplings.
 - Self Supporting-Can support weight of exhaust systems in horizontal or vertical direction. Eliminates extra support hangers.
 - Torsional Degree of Freedom-Capable of accommodating relative twist between upstream and downstream portions of the joint.
 - Stable, Consistent Performance-Unlike flex exhaust decouplers, whose damping and support members change over time, this system displays consistent dynamic performance.
- US Patent 5,683,119



for 1-3/4" & 2" pipe

UNIVERSAL HANGERS

All of ROL's Universal Hangers feature an 11 gauge steel bracket and extra thick vibration absorbing rubber. All of the hangers marked as Swivel, have the capability to pivot, and rotate 360 degrees.

9-1/2" overall length
with holes for 3/8 bolts
swivel open end



518001



5-1/2" overall length
swivel open end

518507

9-1/2" overall length
with holes for 3/8 bolts
swivel closed end



518509



5-1/2" overall length
swivel closed end

518510

Tailpipe Hanger
Fits pipe 1-1/2" to 2-1/2" OD



518513

5-1/2" overall length
swivel closed end



615035

UNIVERSAL HANGERS

Body Mount Universal Hanger
comes with 2 insulators and 2 brackets
that can be bolted to the frame

615008



518600

Rubber Strap Hanger



518511

Rubber Loop Hanger

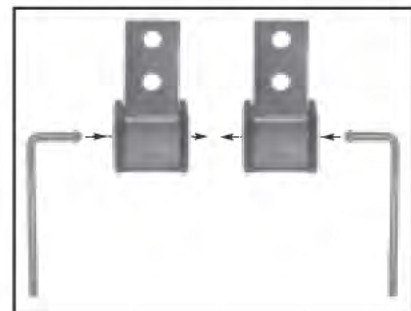


615913

2 Way Hanger



Arrowhead wire fits snugly
either way into bracket



* Note: 50 per case

FLEX TUBING WITH FLANGE



GM Products
uses EG24332 gasket

FTF13200



GM Products
uses EG24338 gasket

FTF13300



GM Products
uses EG24367 gasket

FTF13305



GM Products
uses EG24327 gasket

FTF13420



GM Products
uses EG24328 gasket

FTF13430



GM Products
uses EG24283 gasket

FTF13440



Chrysler Products
uses EG24293 gasket

FTF14400



Chrysler Products
uses EG24357 gasket

FTF14440



Ford Products
uses EG24095 gasket

FTF15200

Check the ROL Exhaust web site for new additions
to our FTF applications at .. www.rol-tech.com

FTF APPLICATIONS

PART NUMBER	APPLICATION	GASKET
FTF13200	2000-02 Chevrolet Impala 3.4L; 1999-03 Chevrolet Malibu 3.1L 1997-03 Chevrolet Monte Carlo 3.1L, 3.4L 1999-03 Pontiac Grand Prix 3.1L	EG24332
FTF13300	2002-03 Chevrolet Cavalier 2.2L 1999-02 Chevrolet Cavalier 2.4L 2002-04 Oldsmobile Alero 2.2L 1999-01 Oldsmobile Alero 2.4L 2002-04 Pontiac Grand Am 2.2L	EG24338
FTF13305	2002-05 Chevrolet Cavalier 2.2L DOHC Vin 6, F 2005-08 Chevrolet Cobalt 2.2L DOHC Vin F 2006-07 Chevrolet Cobalt 2.4L DOHC Vin B 2006-08 Chevrolet HHR 2.2L, 2.4L DOHC 2006-08 Pontiac G5 2.2L DOHC 2007-08 Pontiac G5 2.4L DOHC	EG24367
FTF13420	1996-97 Chevrolet S10 Pickup 2.2L 1996-97 GMC S15 Sonoma 2.2L 1996-97 Isuzu Hombre 2.2L	EG24327
FTF13430	1998-03 Chevrolet S10 2.2L 1998-03 GMC S15 Sonoma 2.2L 1998-03 Isuzu Hombre 2.2L	EG24328
FTF13440	1997-98 Buick Skylark 2.4L 1997-98 Chevrolet Cavalier, Malibu 2.4L 1997-98 Oldsmobile Achevia 2.4L 1997-98 Pontiac Grand Am, Sunfire 2.4L	EG24283
FTF14400	1996-00 Chrysler Town & Country 3.0L 1996-00 Dodge Caravan, Grand Caravan 3.0L 1996-00 Plymouth Voyager, Grand Voyager 3.0L	EG24293
FTF14440	1995-03 Chrysler Cirrus, Sebring 2.4L, 2.5L 1995-03 Dodge Stratus 2.0L, 2.4L, 2.5L 1999-03 Dodge Neon 2.0L, 2.4L	EG24357
FTF15200	2000-05 Ford Taurus 3.0L DOHC Vin S 2000-07 Ford Taurus 3.0L OHV Vin U 2000-05 Mercury Sable 3.0L DOHC Vin S 2005 Mercury Sable 3.0L OHV Vin U	EG24095

METAL RACKS

METAL RACK HEADQUARTERS

- MAR9496A  Assortment only
- MAR9496R   Rack Only
- MAR9496RG   Assortment & Rack & Free Goods
- MARELBSR   Elbow Assortment Rack
- MARELBSA   Elbow Assortment
- MARTDSR   Turndown Assortment Rack
- MARTDSA   Turndown Assortment
- MARTPSR   Tail Pipe Assortment Rack
- MARTPSA   Tail Pipe Assortment

MAR9496R



MARTDSR

Turndown/Sput Headquarters - Complete Coverage • Heavy Gauge Steel • Zinc Coated



MARELBSR

Elbow Headquarters - Serrated for added strength • Complete Coverage: 20°, 45°, 90° • Zinc Coated



MARETPSR

Tailpipe Headquarters - Complete Coverage • Heavy Gauge Steel • Zinc Coated



METAL RACKS

ADAPTER & CONNECTOR ASSORTMENT CONTENTS

Contents of assortment MAR9496A

Adapters, Connectors, Reducers

548501	3*	548511	6*	548522	3	548536	3
548502	3*	548512	3*	548524	3	548539	3
548503	3	548513	6*	548525	3	548540	3
548504	6*	548514	3	548526	3	548543	3
548505	3	548515	3	548529	3	548545	3
548506	3	548516	3	548530	3	548549	3
548507	3	548517	3	548531	3	548552	3
548508	3	548518	3*	548533	3	548554	3
548509	3	548519	3	548534	3	548556	3
548510	3*	548520	3	548535	3		

* 6 additional included in free goods when ordering MAR9496RG

Contents of assortment MARTDSA

TURNDOWNS (SPOUTS) 12"

548600	6 Ea.	1 1/2 ID TURNDOWN
548601	6 Ea.	1 3/4 ID TURNDOWN
548602	6 Ea.	1 7/8 ID TURNDOWN
548603	6 Ea.	2 ID TURNDOWN
548604	6 Ea.	2 1/4 ID TURNDOWN
548605	6 Ea.	2 1/2 ID TURNDOWN
548606	6 Ea.	2 1/8 ID TURNDOWN

TURNDOWNS (SPOUTS) 30"

548610	6 Ea.	1 1/2 ID TURNDOWN
548611	6 Ea.	1 3/4 ID TURNDOWN
548612	6 Ea.	1 7/8 ID TURNDOWN
548613	6 Ea.	2 ID TURNDOWN
548614	6 Ea.	2 1/4 ID TURNDOWN
548615	6 Ea.	2 1/2 ID TURNDOWN
548616	6 Ea.	2 1/8 ID TURNDOWN

Contents of assortment MARELBSA

ELBOWS 90 DEGREES

548700	6 Ea.	1 1/2 ID ELBOW
548701	6 Ea.	1 3/4 ID ELBOW
548702	6 Ea.	1 7/8 ID ELBOW
548703	6 Ea.	2 ID ELBOW
548704	6 Ea.	2 1/4 ID ELBOW
548705	6 Ea.	2 1/2 ID ELBOW

ELBOWS 45 DEGREES

548750	6 Ea.	1 1/2 ID ELBOW
548751	6 Ea.	1 3/4 ID ELBOW
548752	6 Ea.	1 7/8 ID ELBOW
548753	6 Ea.	2 ID ELBOW
548754	6 Ea.	2 1/4 ID ELBOW
548755	6 Ea.	2 1/2 ID ELBOW

ELBOWS 20 DEGREES

548770	6 Ea.	1 1/2 ID ELBOW
548771	6 Ea.	1 3/4 ID ELBOW
548772	6 Ea.	1 7/8 ID ELBOW
548773	6 Ea.	2 ID ELBOW
548774	6 Ea.	2 1/4 ID ELBOW
548775	6 Ea.	2 1/2 ID ELBOW

Contents of assortment MARTPSA

TAIL PIPES 18"

548620	6 Ea.	1 1/2 ID TAILPIPE
548621	6 Ea.	1 3/4 ID TAILPIPE
548622	6 Ea.	1 7/8 ID TAILPIPE
548623	6 Ea.	2 ID TAILPIPE
548624	6 Ea.	2 1/4 ID TAILPIPE
548625	6 Ea.	2 1/2 ID TAILPIPE
548627	6 Ea.	2 1/8 ID TAILPIPE

TAIL PIPES 24"

548630	6 Ea.	1 1/2 ID TAILPIPE
548631	6 Ea.	1 3/4 ID TAILPIPE
548632	6 Ea.	1 7/8 ID TAILPIPE
548633	6 Ea.	2 ID TAILPIPE
548634	6 Ea.	2 1/4 ID TAILPIPE
548635	6 Ea.	2 1/2 ID TAILPIPE
548636	6 Ea.	2 1/8 ID TAILPIPE

TAIL PIPES 36"

548361	6 Ea.	2 ID TAILPIPE
548362	6 Ea.	2 1/4 ID TAILPIPE
548363	6 Ea.	2 1/8 ID TAILPIPE
548364	6 Ea.	1 3/4 ID TAILPIPE
548365	6 Ea.	1 7/8 ID TAILPIPE
548366	6 Ea.	2 1/2 ID TAILPIPE
548367	6 Ea.	1 1/2 ID TAILPIPE

Performance



WELD ON TIPS

STAINLESS STEEL

45° ANGLE CUT TIPS ROLLED PENCIL TIPS ROLLED ANGLE CUT TIPS

45° ANGLE CUT TIPS

Part No.	Length	ID	OD
ACT312SS	12"	2-1/4"	3"
ACT316SS	16"	2-1/4"	3"
ACT318SS	18"	2-1/4"	3"
ACT322SS	22"	2-1/4"	3"
ACT324SS	24"	2-1/4"	3"
ACT31212SS	12"	2-1/4"	3-1/2"
ACT31216SS	16"	2-1/4"	3-1/2"
ACT31218SS	18"	2-1/4"	3-1/2"
ACT31222SS	22"	2-1/4"	3-1/2"
ACT31224SS	24"	2-1/4"	3-1/2"
ACT412SS	12"	2-1/4"	4"
ACT416SS	16"	2-1/4"	4"
ACT418SS	18"	2-1/4"	4"
ACT422SS	22"	2-1/4"	4"
ACT424SS	24"	2-1/4"	4"



ANGLE CUT



ROLLED PENCIL TIP

ROLLED PENCIL TIPS

Part No.	Length	ID	OD
RPT312SS	12"	2-1/4"	3"
RPT318SS	18"	2-1/4"	3"
RPT322SS	22"	2-1/4"	3"
RPT31212SS	12"	2-1/4"	3-1/2"
RPT31218SS	18"	2-1/4"	3-1/2"
RPT31222SS	22"	2-1/4"	3-1/2"
RPT412SS	12"	2-1/4"	4"
RPT418SS	18"	2-1/4"	4"
RPT422SS	22"	2-1/4"	4"

ROLLED ANGLE CUT TIPS 20°

Part No.	Length	ID	OD
RACT312SS	12"	2-1/4"	3"
RACT318SS	18"	2-1/4"	3"
RACT322SS	22"	2-1/4"	3"
RACT31212SS	12"	2-1/4"	3-1/2"
RACT31218SS	18"	2-1/4"	3-1/2"
RACT31222SS	22"	2-1/4"	3-1/2"
RACT412SS	12"	2-1/4"	4"
RACT418SS	18"	2-1/4"	4"
RACT422SS	22"	2-1/4"	4"

WELD ON SINGLE TIP STAINLESS STEEL

SST1406 Resonated

Length:9"
Inlet:2-1/2"
Outlet:4"



SST1456 Resonated

Length:9"
Inlet:3"
Outlet:4-1/3"



SST2403

Length:8-1/2"
Inlet:3"
Outlet:2-3/4"



WELD ON SINGLE TIP STAINLESS STEEL

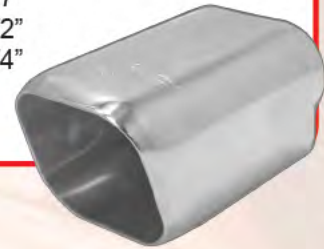
SST2404 *Resonated*

Length:8"
Inlet:2-1/2"
Outlet:3-1/4"



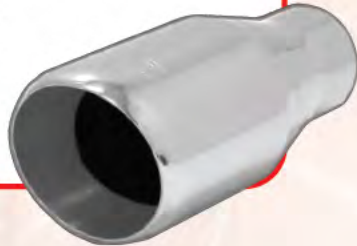
SST2405

Length:7"
Inlet:2-1/2"
Outlet:3-1/4"



SST2408

Length:9"
Inlet:2-1/2"
Outlet:4"



SST2409

Length:9"
Inlet:2-1/2"
Outlet:4-1/2"



WELD ON SINGLE TIP STAINLESS STEEL

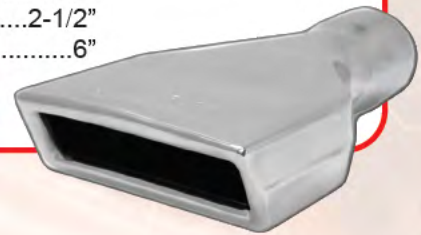
SST2410C **Resonated**

Length:8-1/4"
Inlet:2-1/2"
Outlet:4"



SST2446

Length:10"
Inlet:2-1/2"
Outlet:6"



SST2448

Length:10"
Inlet:2-1/2"
Outlet:8"



WELD ON DUAL TIP STAINLESS STEEL

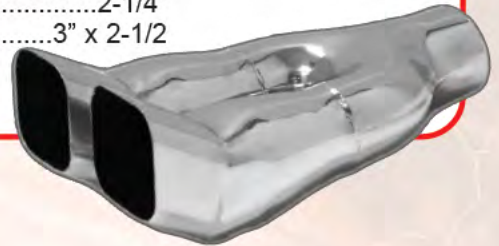
SST2449

Length:.....11"
Inlet:2-1/4"
Outlet:3-1/2"



SST2450

Length:.....11"
Inlet:2-1/4"
Outlet:3" x 2-1/2"



SST2451

Length:.....11"
Inlet:2-1/4"
Outlet:3"



SST2452

Length:.....11"
Inlet:2-1/4"
Outlet: ..3-1/4" x 2-1/2"



BOLT ON TIPS

STAINLESS STEEL



ALL ROL XTREME BOLT ON TIPS FEATURE INTERNAL CLAMPS THAT MOUNT SECURELY TO PIPE FOR EASY INSTALLATION

581105 Fits pipes up to 1-3/4"

Length:
Inlet:1-3/4"
Outlet:



Resonated

581106 Fits pipes up to 2"

Length:
Inlet:2"
Outlet:



Resonated

582354 Fits pipes up to 2-1/2"

Length:9"
Inlet:2-1/2"
Outlet:3-1/2"



Resonated

582356 Fits pipes up to 2-1/2"

Length:9"
Inlet:2-1/2"
Outlet:



Resonated

582406 Fits pipes up to 2"

Length:9"
Inlet:2"
Outlet:3-3/4"



Resonated
ROUND

582407 Fits pipes up to 2"

Length:9"
Inlet:2"
Outlet:4"



Resonated
SLANT

582416 Fits pipes up to 2-1/2"

Length:9"
Inlet:2-1/2"
Outlet:4"



Resonated
ROUND

582417 Fits pipes up to 2-1/2"

Length:9"
Inlet:2-1/2"
Outlet:4"



Resonated
SLANT

BOLT ON TIPS

STAINLESS STEEL

582418 Fits pipes up to 2-1/2"

Length:.....11"
Inlet:2-1/2"
Outlet:.....4"

Resonated
ROUND



582421 Fits pipes up to 3"

Length:.....11"
Inlet:3"
Outlet:.....5"

Resonated
SLANT



582419 Fits pipes up to 2-1/2"

Length:.....11"
Inlet:2-1/2"
Outlet:.....4"

Resonated
SLANT



582431 Fits pipes up to 3-1/2"

Length:13-1/4"
Inlet:3-1/2"
Outlet:

Resonated
ROUND



CHROME BOLT ON TIPS

580156 Fits pipes up to 1-3/4"

Length:7"
Inlet:1-7/8"



580216 Fits pipes up to 2"

Length:9"
Inlet:2-1/8"



580218 Fits pipes up to 2"

Length:9"
Inlet:2-1/8"



580226 Fits pipes up to 2-1/4"

Length:9"
Inlet:2-1/2"



580236 Fits pipes up to 2"

Length:7-1/2"
Inlet:2-1/8"



580246 Fits pipes up to 2"

Length:9"
Inlet:2-1/8"



580258 Fits pipes up to 1-7/8"

Length:9"
Inlet:2"



580266 Fits pipes up to 2"

Length:9"
Inlet:2-1/8"



CHROME BOLT ON TIPS

580268 Fits pipes up to 2-1/4"

Length:9"
Inlet:2-3/8"



580276 Fits pipes up to 2"

Length:9"
Inlet:2-1/8"



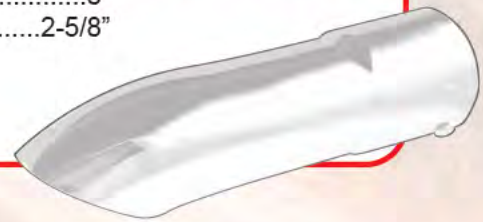
580286 Fits pipes up to 2-1/4"

Length:9"
Inlet:2-3/8"



580356 Fits pipes up to 2-1/2"

Length:8"
Inlet:2-5/8"



582521 Fits pipes up to 2-1/4"

Length:9"
Inlet:2-3/8"



582531 Fits pipes up to 2"

Length:9"
Inlet:2-1/8"



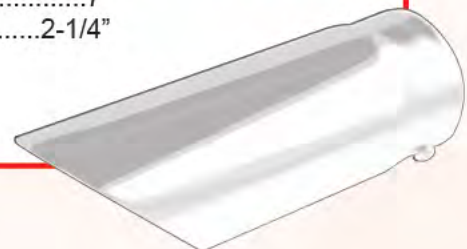
582531B Fits pipes up to 2"

Length:9"
Inlet:2-1/8"



582691 Fits pipes up to 2-1/8"

Length:7"
Inlet:2-1/4"



CHROME BOLT ON TIPS

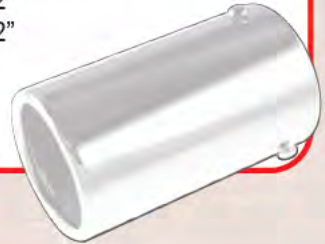
583011 Fits pipes up to 2"

Length:4-1/2"
Inlet:2-1/8"



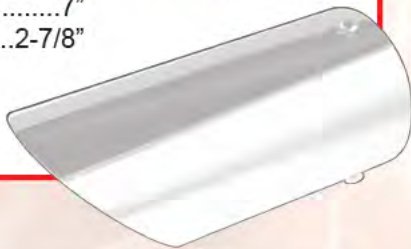
583021 Fits pipes up to 2-1/4"

Length:4-1/2"
Inlet:2-1/2"



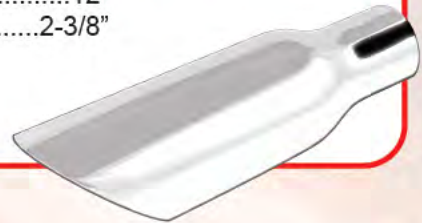
583091 Fits pipes up to 2-3/4"

Length:7"
Inlet:2-7/8"



589331 Fits pipes up to 2-1/4"

Length:12"
Inlet:2-3/8"



589341 Fits pipes up to 2-1/4"

Length:18"
Inlet:2-3/8"



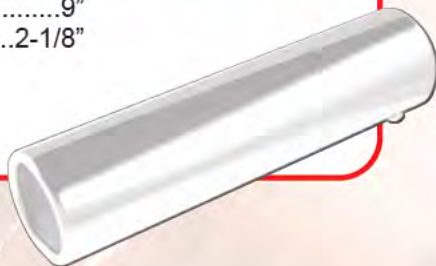
589351 Fits pipes up to 2-1/4"

Length:24"
Inlet:2-3/8"



592431 Fits pipes up to 2"

Length:9"
Inlet:2-1/8"



DUAL TIP

581246 Fits pipes up to 2-1/4"

Length:10"
Inlet:2-3/8"



ROL TECH INC.

62 ELM STREET, FT. LORAMIE, OH 45845

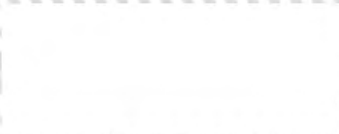
PH: 937-295-3651

RETAIL EXHAUST CATALOG

Exhaust Accessories & Performance Parts



Scan this QR code
and link to our
website for the
latest product
updates.



Printed in USA
Catalog Z14333